

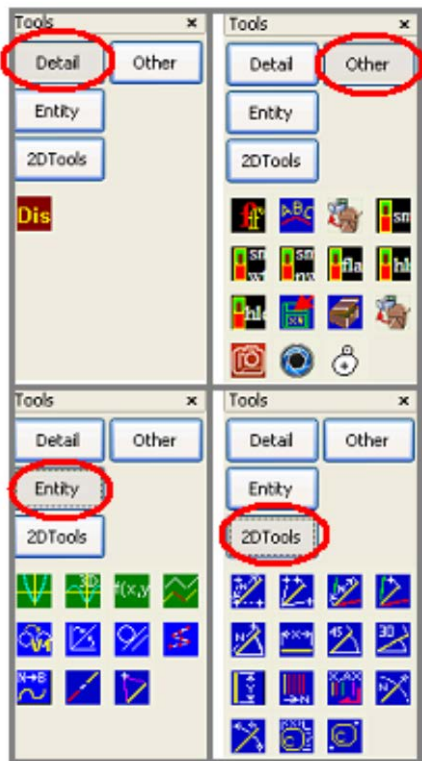
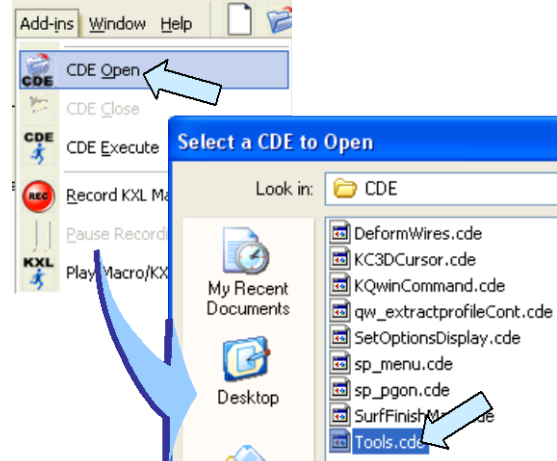
## Accessing the TOOLS CDE [KN131]

**How can I find the extra tools available in the TOOLS CDE?**

You may have seen a collection of additional tools used in KeyCreator that are in the two main palettes or Menu pulldowns. Additional functions like this are typically provided as CDE's and are not part of the core code.

The most extensive CDE is the TOOLS.CDE. To access this, click on CDE OPEN in the ADD-INS Pulldown Menu.

Then, click on the TOOLS.cde.



The TOOLS Palette will appear at the left side of your screen.

There are four sections with a collection of very interesting tools. If you find a tool that you will use often, you can move the Icon to one of your active toolbars so it is always handy.