

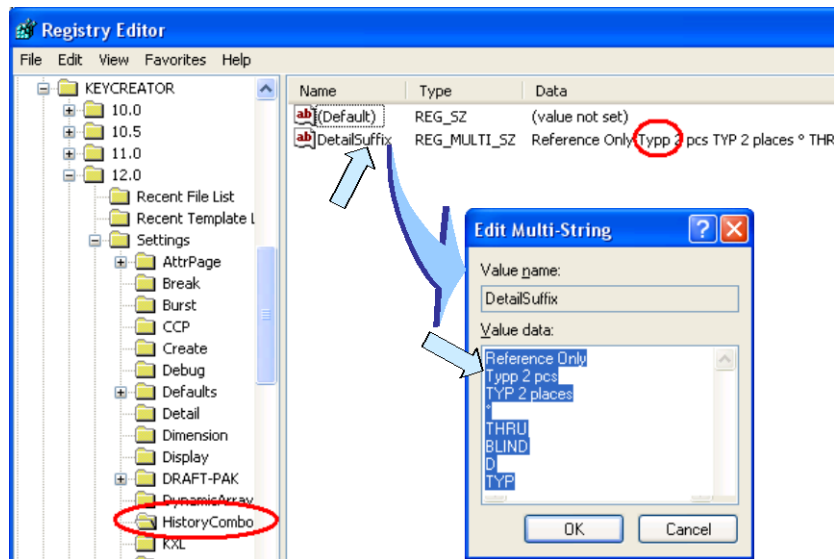
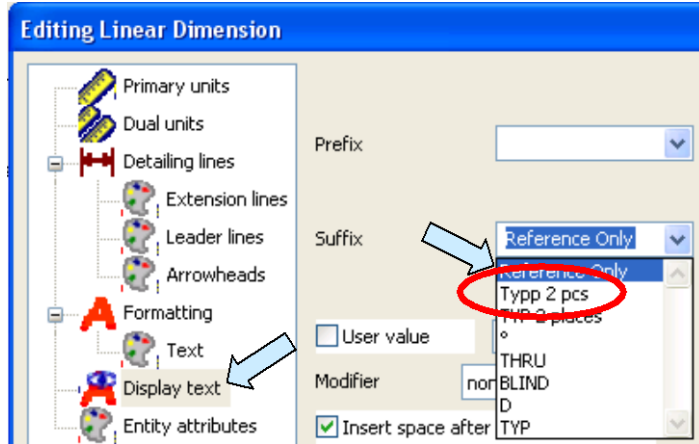
Editing Display Text Lists [KN130]

How can I edit previously created display text entries?

Display Text entries are great since KeyCreator saves previously used ones for instant retrieval.

When you click on the pulldown to the right of the Suffix or Prefix field, you can select previously typed entries instead of typing them over again.

Users often ask, “How can I edit or remove items from the list?” In the illustration to the right, we want to eliminate the second “p” in the circled entry.



These items are stored in the Windows Registry.

To modify this list, run a Registry Edit and click on the HistoryCombo Option under Settings in KeyCreator.

You can see the typo (circled in red) to the left.

Double click on this entry and an editing Dialog Box appears.

Just edit the desired item (or delete it entirely) in this edit box and then click on OK.

The pulldown list will now show the correction!