

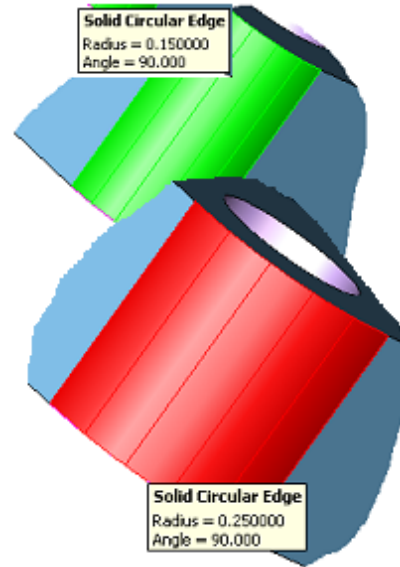
KEYCREATOR 3D Direct Modeling Software

KeyCreator Lesson KC8503

Using Walk To and Zoom To

When evaluating two models where there are numerous discrepancies, using the powerful Walk To command makes it easier to evaluate and document the individual items.

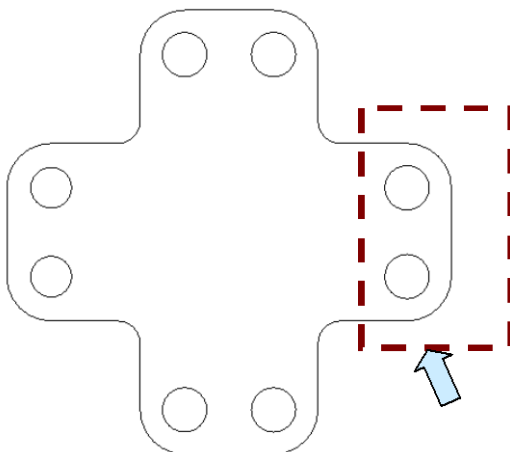
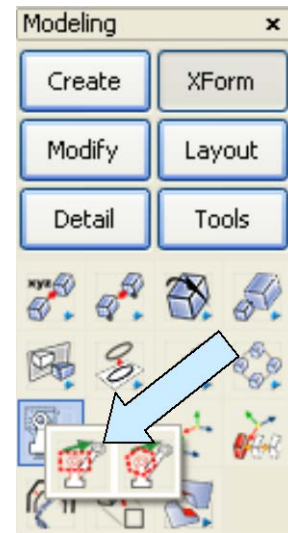
In this exercise, we'll add some additional discrepancies to the "TestIs" part that you created in lesson KC8501. Then, we'll use the modified TestIs part and the TestWas part to explore the use of the Walk To Function.



Open the "TestIs" file that you saved earlier. Immediately click on the SAVEAS Icon and call your new file "TestIs2."

Switch to the TopView. (View 1.)

Click on the XFORM BOX-MOVE WINDOW Icon.

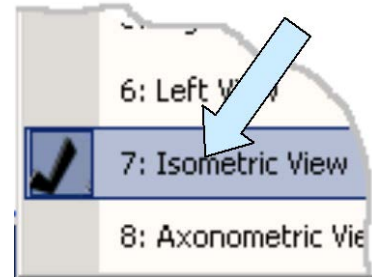
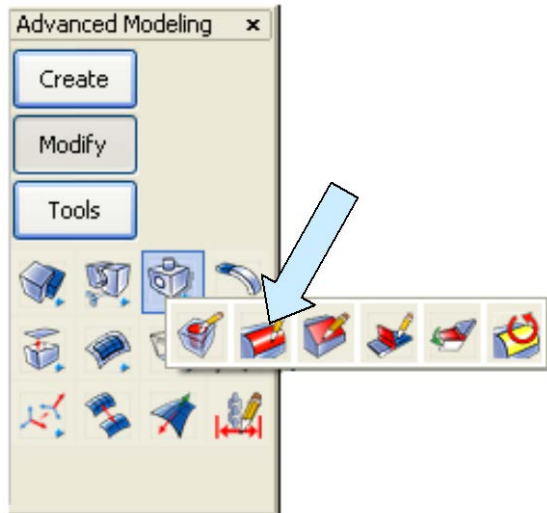


Drag a selection window around the right end of the part, making sure that it cuts through the linear portion of the leg.

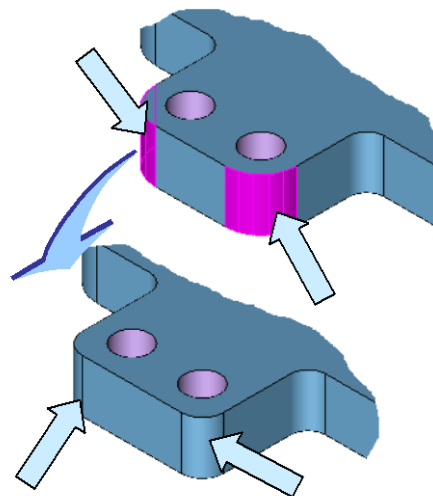
Use the XYZ Option and type 0.1 for the X value. Then, hit the ENTER Key three times.

KEYCREATOR 3D Direct Modeling Software

Next, switch to the Isometric View. (View 7.)



Click on the EDIT BLEND Icon.



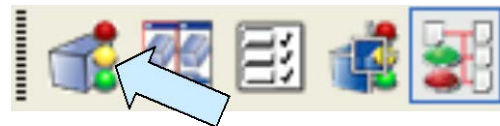
Select the two outside blends on the front leg of the part and hit the ENTER Key.

Type 0.15 for the radius value and hit the ENTER Key.

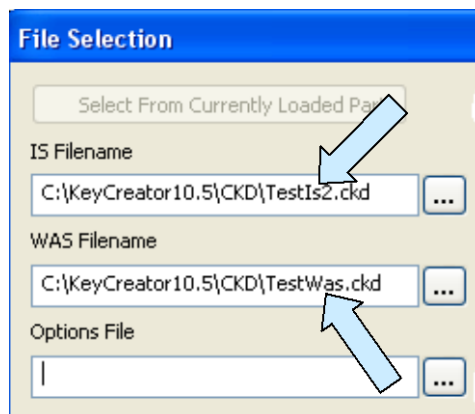
Click on the FILE SAVE Icon.

Comparing the Models

Click on the VALIDATE PARTS Icon.



A Dialog Box appears.



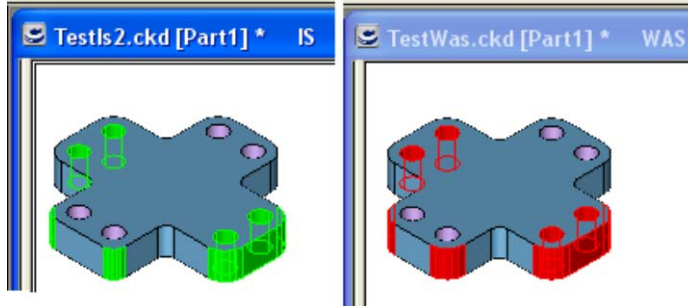
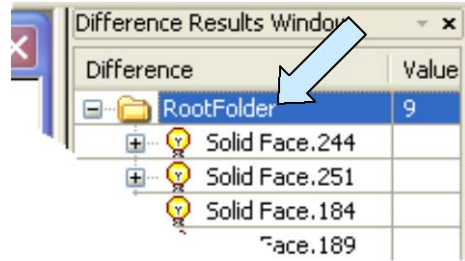
Click on the browse button to the right of the IS Filename Field and select the "TestIs2" file that you just saved.

Then, use the browse button to the right of the WASFilename Field and select the "TestWas" file from lesson KC8501. Click on the OK Button.

KEYCREATOR 3D Direct Modeling Software

Notice that both files appear on the screen in a side by side layout.

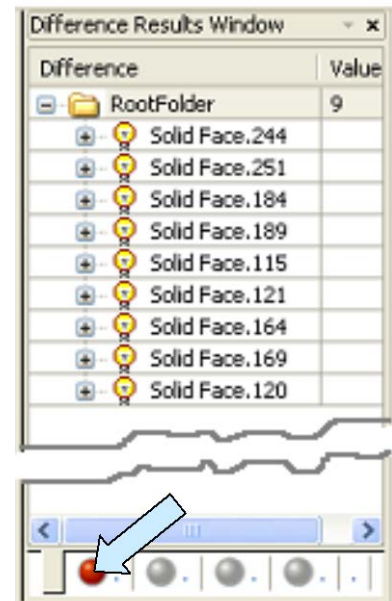
With the Difference Results Window Toggled on, click on the RootFolder row at the top and all of the discrepancies highlight.



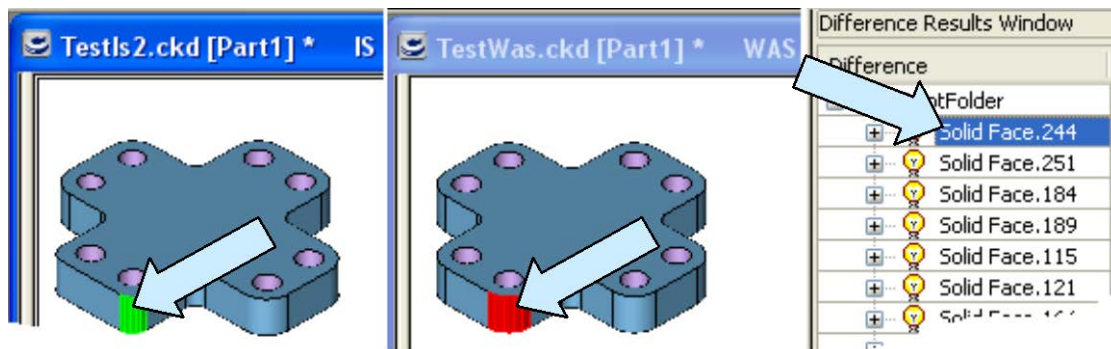
Your IS and WAS Files should look like this:

You'll also notice that there is quite a bit of information in the Difference Results Window.

Notice the red sphere at the bottom of the window. The red color indicates that there are differences. A green sphere here would indicate that no differences were found.

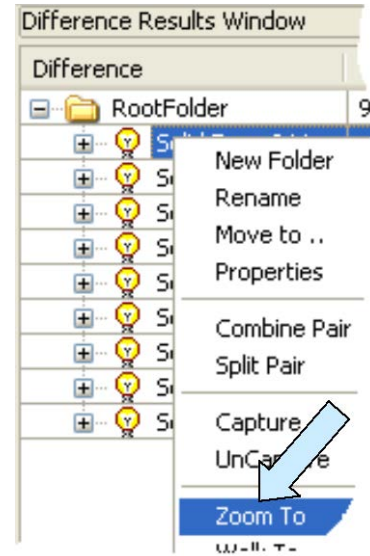
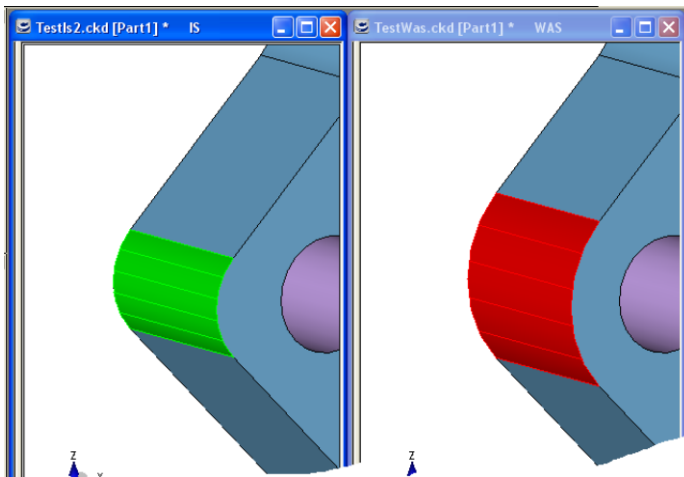


If you click on a particular Solid Face Entry, the corresponding faces will highlight in the IS and WAS windows.



KEYCREATOR 3D Direct Modeling Software

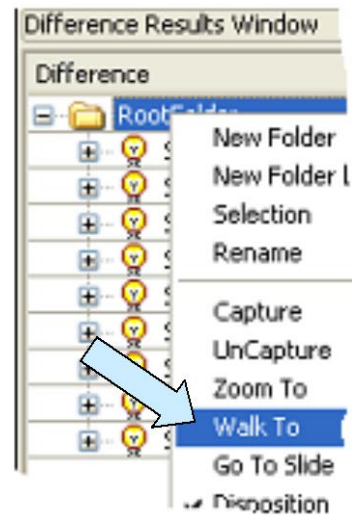
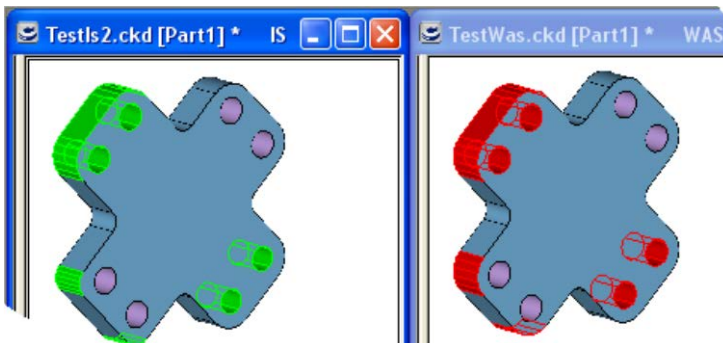
Right Mouse Click on the Solid Face Entry that you selected and then click on the Zoom To Option in the menu that appears.



The pair of faces are magnified in the IS and WAS windows.

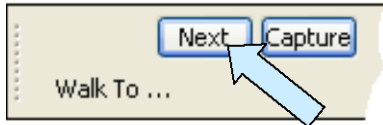
Note: Sometimes when you use the ZoomTo Function you will zoom to the back side of the faces. If you dynamically rotate one of the models around you can then use the Synchronize Views Function to get the other one to match.

Next, Right Mouse Click on the Root Folder Row and then click on the Walk To Option in the Menu that appears.



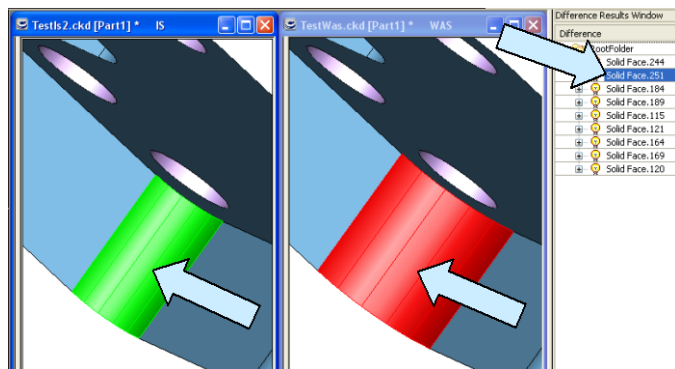
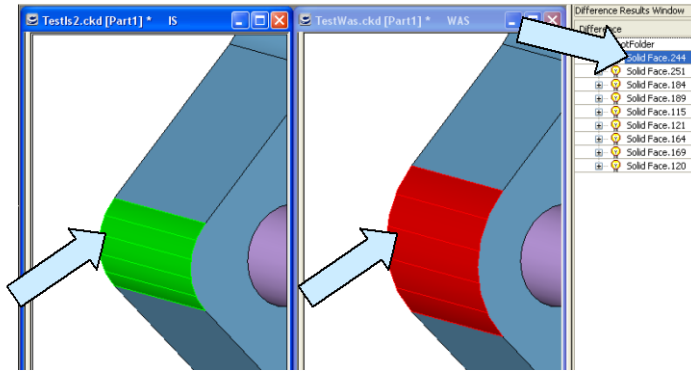
The models in both the IS and Was windows show all of the highlighted discrepant face pairs.

KEYCREATOR 3D Direct Modeling Software



You will see a Next Button and a Capture Button on the Conversation Bar. (In another lesson we'll look at using the Capture Button to create graphic Images of the differences.)

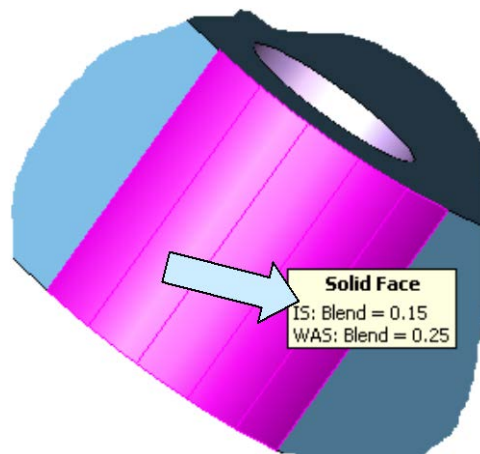
Click on the Next Button and you "Walk" to the first set of discrepant faces.



Click on the Next Button again and you "Walk" to the next set of discrepant faces.

You can "walk" through the entire model, looking at each pair of discrepant faces. At any point you can click on the ESCAPE Button to exit the process and the current selected faces will be displayed on the screen.

Move your cursor over any discrepant face and the Tool Top will show the values of the IS and WAS models. Here we are in the TestWas Model looking at one of the discrepant outer corner blends.

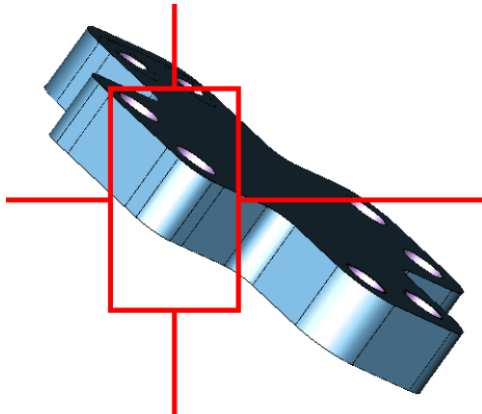
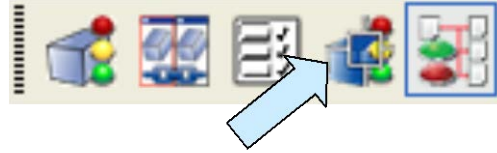


KEYCREATOR 3D Direct Modeling Software

Using the Walk To Function in the Examine View

If you are currently in a Walk To sequence, click on the ESCAPE Button to exit the process and the current selected faces will be displayed on the screen.

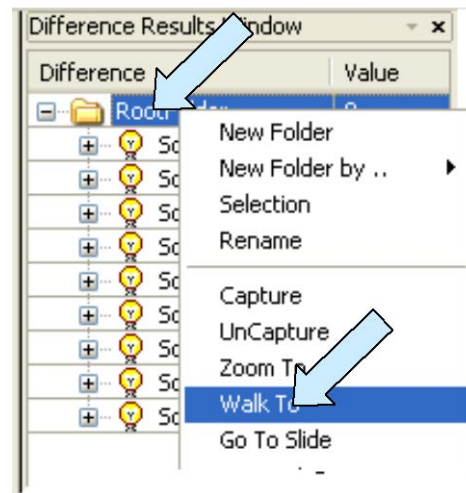
Next, click on the EXAMINE VIEW Icon.



Drag the slider on the right side of the Examine View so that the entire part is displayed on the screen.

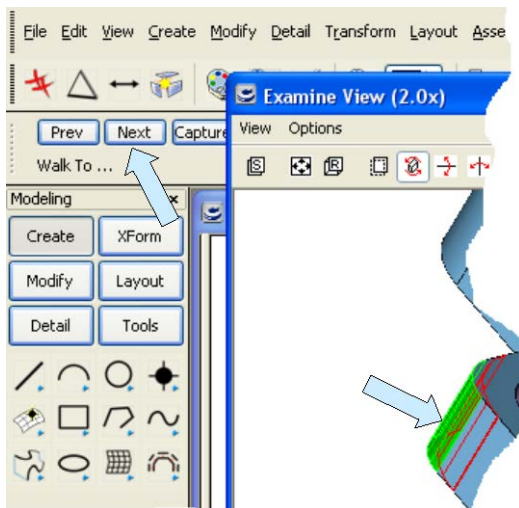
Your screen should look like this:

Right Mouse Click on the Root Folder Row in the right pane and then click on the Walk To Option in the menu that appears.



Now, notice that as you do this, the Examine View Window goes inactive and the WalkTo sequence starts in the two windows behind it.

Click on the Examine View Window and the Walk To Sequence switches to it!



This is great since you can walk to each set of deviant faces and see them superimposed on each other.

Just drag the Examine View Window to the right enough so that you have access to the Walk To Operation Buttons on the Conversation Bar.

Some users prefer this method for analyzing the differences between discrepant face pairs.